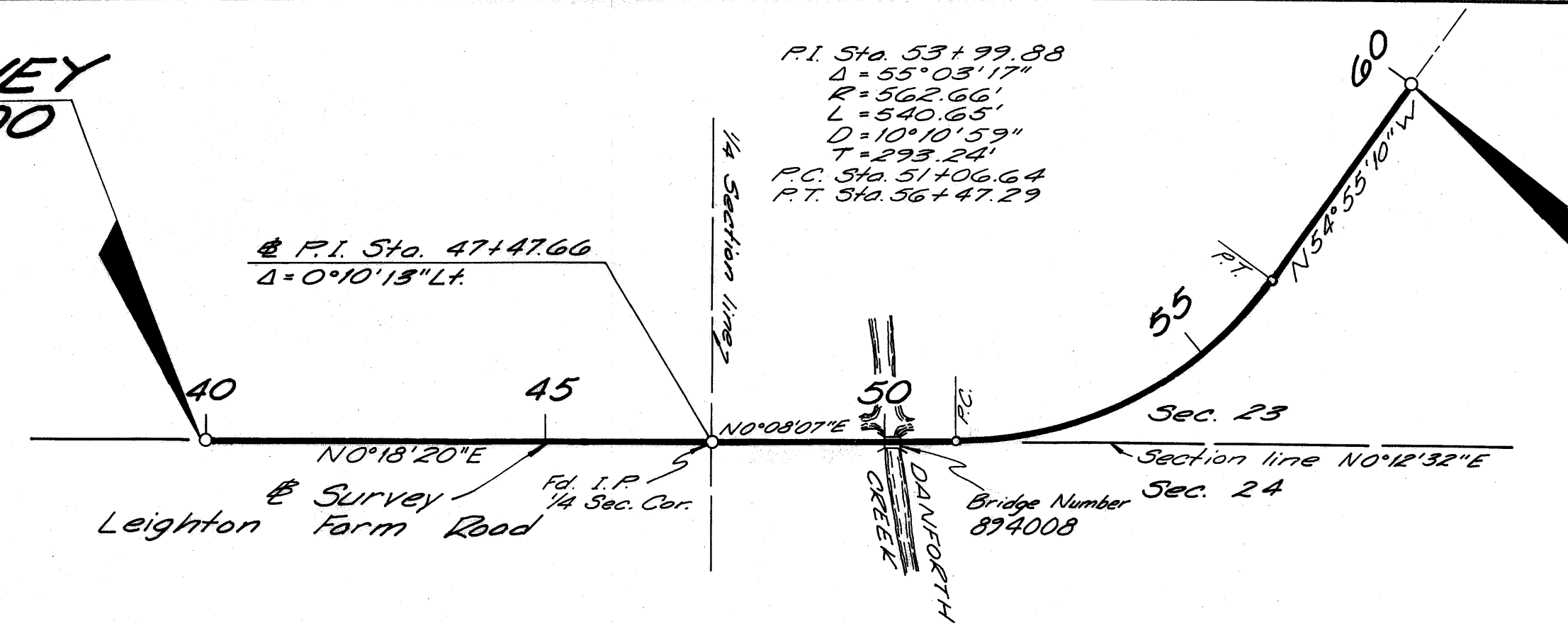


**BEGIN SURVEY
STA. 40+00.00**

**TWP.-38-S.
RGE.-40-E.**

Scale: 1"=200'



FILED FOR RECORD
MARTIN COUNTY, FLA.

83 NOV 21 AM 11:46

LOUISE V. ISAACS
CLERK OF THE CIRCUIT COURT

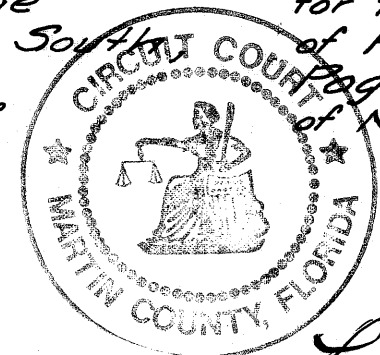
**END SURVEY
STA. 60+00.00**

Note:
Date of Survey: May 29, 1979.

I, Bruce L. Gordon, as Director of Administration of the State of Florida Department of Transportation, do hereby certify that this map is the Official Map of Location and Survey of a portion of Section 89000 in Martin County, Florida. Said portion of Section 89000 including Danforth Creek Bridge Number 894008 and approaches on Leighton Farm Road in Sections 23 and 24, Township 38 South, Range 40 East.

Prepared and adopted by the State of Florida Department of Transportation under provisions of Section 335.02, Florida Statutes of 1955.

Filed for record in the Office of the Clerk of the Circuit Court for the County of Martin State of Florida, in Map Book 9, Page 52, of November 21, 1983, on the 21 day of November, A.D. 1983.



Bruce L. Gordon
Director of Administration
State of Florida
Department of Transportation

Attest: *Alyssa J. Niemann*
Executive Secretary

Approved: *W. A. [Signature]*
Engineer of Right of Way
Date: November 1, 1983.

Louise V. Isaacs, By Patricia [Signature]
Clerk of the Circuit Court
Martin County, Florida.

RETURN TO
 DEPARTMENT OF TRANSPORTATION
 ACQUISITION DEPARTMENT
 2800 SOUTH ANDREWS AVENUE
 FORT LAUDERDALE, FLORIDA 33316